

SCAN ME



or click [here](#)

to continue reading in [flipbook](#) mode



Part of SGS Group

RYOBI-G

CORPORATE BROCHURE

To be the preferred geo-solutions provider in Singapore and beyond.

International Edition

MESSAGE FROM CEO

Dr. Wang Hou (Joseph), PhD, the founder and (current) CEO of Ryobi Geotechnique International Pte Ltd (Ryobi-G) is an ambitious, progressive businessman. He is also a veteran Geotechnical Engineer with over 30 years of experience in the construction industry.



Dr Wang's career began at Mott MacDonald (Singapore) Pte Ltd as a Geotechnical Engineer. Soon after, he joined Maunsell Consultants Pte Ltd, followed by Presscrete Engineering Pte Ltd, to further his career, taking on and leading several high-profile geotechnical projects, making a name for himself in the construction industry.

At the peak of his engineering career, Dr Wang saw an opportunity to start his own business, which led to the founding of Ryobi Geotechnique in 2000. Under his guidance and vision, he has led the company from strength to strength, becoming a much sought-after engineering service provider in Singapore.

From securing multi-million-dollar contracts, generating millions of dollars in annual turnovers, to growing the company from a small team of 10 to an organization with over 530 staff in 4 offices spread across Singapore and Malaysia, Dr. Wang has achieved the highest level of success that anyone could hope for. But his ambition does not stop there, as he has set his sights to take the company to the next level, - beyond Singapore.

Dr. Joseph Wang

CHIEF EXECUTIVE OFFICER (CEO)

RYOBI GEOTECHNIQUE INT'L PTE LTD

When I started this company, I understood that our greatest asset as a company is our people – which is why I made it our mission to focus on people development – *Develop Our People to Serve People*. This is the foundation on which Ryobi-G's services are built that expresses Ryobi-G's commitment to developing leaders that will drive the organization's performance and productivity, which in turn creates value for others.

The Why, Personal Growth, Teamwork, and Outcomes are the 4 components that make up the essence of our culture. It defines who we are, how we act, and what we believe is our duty when serving others. It is thanks to this philosophy, and our people, we were able to grow into the modern industry-leading organisation we are known today.

I am proud of how far we've come and looked forward to what's ahead.

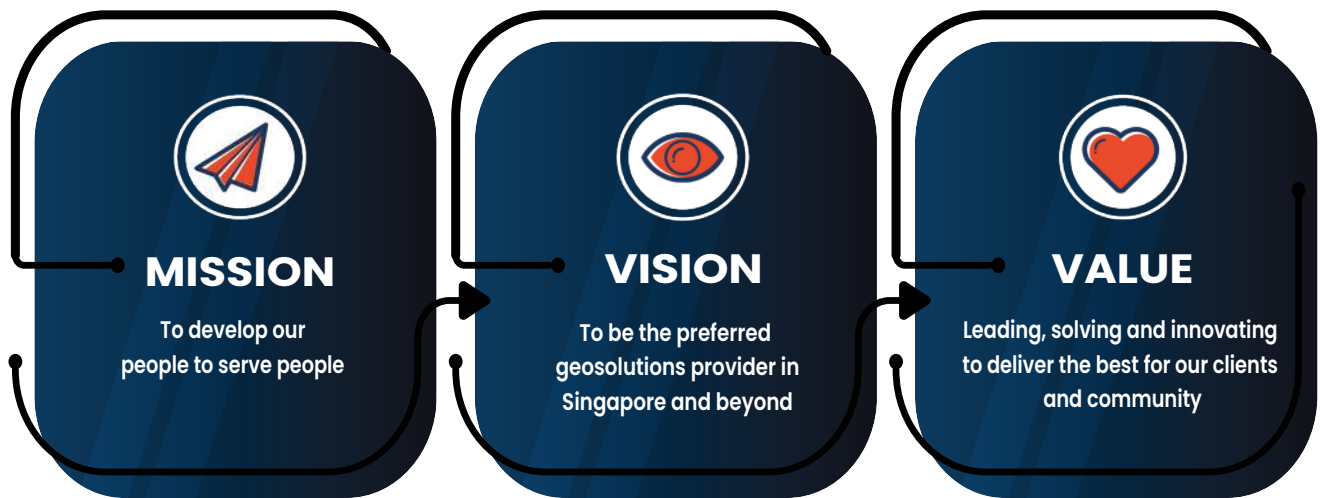
Joseph Wang

TABLE OF CONTENTS

Message from CEO	01
Table of Contents	02
About Our Company	03
Our Global Expansion	04
Our Management	05
Our Company History	06
Project Highlights	08
Why Choose Us?	09
Awards and Certifications	10
Our Clients	11
Our Happy Clients & Feedback	12
Company Portfolio	13
Our Services	14
Our Geotechnical Services	15
Our Modelling & Imaging Services	17

ABOUT OUR COMPANY

Ryobi Geotechnique International Pte Ltd (Ryobi-G) is a geotechnical service provider based in Singapore (HQ) and Malaysia. We offer a range of Geotechnical, Monitoring, Modelling & Imaging solutions that support our customers in their projects across multiple industries.



20+
Years Experience

Ryobi-G has been providing quality geotechnical services and solutions for over 20 years, establishing ourselves in the process as reliable and dependable go-to solutions providers in South East Asia.



530+
Team Members

Our 530+ strong workforce consists of Singaporeans, Malaysians, Burmese, Chinese, Indians, and Bangladeshis spread across 4 different offices in Singapore and Malaysia.



100+
Ongoing Projects

Each year, Ryobi-G, is actively involved in a number of projects, in both public and private sectors for a diverse range of industries.



1000+
Projects Completed

In the 20+ years Ryobi-G has been operating, the company has completed over 1000 projects in both, private and public sectors in Singapore and overseas.

OUR GLOBAL EXPANSION

In early 2021, Ryobi-G was officially acquired by SGS, a Swiss multinational testing, inspection, and certification company. This acquisition serves as a platform for Ryobi-G to expand its operations globally.



TRANSFORMING LIFE TOGETHER

What role will SGS play as a majority shareholder?

SGS is committed to supporting Ryobi-G's growth and mission to be the preferred geo-solutions provider in Singapore and beyond through collaborative means.

What's changed since the acquisition?

Nothing has fundamentally changed for Ryobi-G. Our commitment remains stronger than ever to serve our society, our clients, and the industry.

Ryobi-G and SGS aims to work together, leveraging the best of each other to better address the needs of the global market and resolve issues faced by society, our clients, and the industry by providing innovative, industry-leading solutions of the highest standard.

Ryobi has delivered consistent organic growth over the past 20 years. Like SGS, providing innovative and reliable solutions to customers and delivering market-leading services has always been our value and strength.

Joining SGS will greatly enhance our capabilities from a technical, operational and financial perspective, which will better equip us to both serve our long-time customers and explore new opportunities in overseas markets

Joseph Wang,
CEO of Ryobi Geotechnique International
Pte Ltd (Ryobi-G)

OUR MANAGEMENT

Ryobi-G's growth and overall success can be attributed to the leaders of the company. Their personal values mixed with company's clear mission, vision, and values, is what shaped the organisation into becoming a modern, forward-thinking business that is set on becoming an industry leader, providing quality service to Singapore and beyond.



"Great leaders genuinely care for others and have a keen ability to find the best in people."

-- Dr. Wang Hou

Dr. Wang Hou (Joseph)
Chief Executive Officer

Dr. Wang Hou is a founding member of Ryobi-G. Over the years, he has held multiple roles as a leader in the company, playing an important role in developing the company, advancing the technical capabilities of the company, making Ryobi-G one of the most versatile, sought-after solutions provider in the market.



Luo Changwei
Chief Operating Officer

Mr. Luo is the co-founder, and (currently) the Chief Operating Officer (COO) of Ryobi-G. His technical prowess, combined with a keen-eye for business opportunities, and connections in the industry has helped the company grow, securing lucrative deals consistently year after year, turning Ryobi-G into a profitable and technical powerhouse sought after by many in the industry.



Kong Sio Keong
Technical Director

Mr. Kong joined Ryobi-G in 2015 as the Technical Director of Ryobi-G with over 40 years of experience in the industry. His technical expertise as a Geotechnical Specialist, combined with 40+ years of experience working on grand-scale construction projects around the world was pivotal in taking Ryobi-G to the next level, guiding the company as they took on work for larger projects with increasing complexity.

OUR COMPANY HISTORY

From humble beginnings, Ryobi-G has grown as a business building on its successes, our vision as a company has always remained the same.

Below is a timeline which highlights some of the key moments in Ryobi-G's life since its inception in 2000.



2000

The Founding Year

The company was founded in Singapore as Ryobi Geotechnique Pte Ltd by Dr Wang Hou (Joseph), Ryobi-G's current Director and CEO.



2001

First Overseas Project

Awarded our first overseas project under engineering and slope stabilisation in Batam.

Aside from being the starting point for our involvement in overseas projects, these experiences greatly contributed to our subsequent success in winning orders for large overseas projects.



2005

International Operation Expansion

Establishment of Ryobi Geotechnique International Pte Ltd (RGI) and Ryobi Geotechnique (M) Sdn Bhd in Malaysia.

Building on our reputation as a leading geotechnical provider in Singapore, the RGI team has now grown to over 530 members, and has worked on various projects in 6 different countries (Singapore, Malaysia, Philippines, China, Indonesia, and UAE).

Ryobi-G has come a long way since its inception to becoming a major player in the industry with over 530 workforce delivering best-practice, community-defining infrastructure, industrial, environmental, and social projects globally.

As a result, our services have earned widespread recognition across multiple industries for providing quality, innovative and practical solutions to challenging projects. This would not be possible without our drive to always look for ways to better serve our clients and community.

20+ years of growth is never a simple task. Given its highs and lows, Ryobi-G has gone from strength to strength, never settling on past achievements and failures, only to learn and build from it. This is our journey.



2007

First Million Dollar Mark

Ryobi-G is awarded its first and second multi-million dollar contracts – soil investigation, and instrumentation works.



2010

Recognition Of Excellence

In 2010, Ryobi-G was presented with the SME Growth Excellence Recognition award.

This recognition not only underscores our achievement as a fast moving and rapidly growing business but also recognizes our continuous work progress in becoming a leading geotechnical solutions provider in the industry.

To date, Ryobi-G has grown to be a reputable company and has been recognized by numerous renowned organizations in Singapore and internationally.



2021

Grow To Serve

In early 2021, Ryobi-G was officially acquired by SGS, a Swiss multinational testing, inspection, and certification company.

This acquisition serves as a platform for Ryobi-G to expand its operations globally, combined with SGS's expertise, resources, and shared values, enabling us to better serve our clients and community.

PROJECT HIGHLIGHTS

Over the years, Ryobi-G has taken on a wide variety of challenging projects around the globe. Whether they are big or small, simple or complex, we strive to offer the best possible solution(s) for any given task. Here are some examples of projects we've worked on in the past:



SINGAPORE

Performed 3D laser scanning and modelling to capture the existing condition of buildings and structures throughout Singapore.



DUBAI

Conducted a geophysical survey to identify potential anomalies and soft zones beneath the Al-Zora shipyard.



MALAYSIA

Deployed multiple vibration monitoring systems to assist University Technology Mara (UiTM) in their structural monitoring efforts of key buildings on campus.

CHINA

Installed a network of monitoring systems to assess the integrity of rock slopes beside the Yibin, Gong Xian ShuangMa cement plant.

INDONESIA

Carried out a borehole radar survey to confirm the location of existing anchors beneath the existing retaining structure in Batam.

MALAYSIA

Deployed a series of monitoring systems to monitor (in real-time) the stability of rock and soil slopes throughout Putrajaya.



1370+

completed projects
as of 2023

90+

ongoing projects
as of 2023

SGD 360 MIL

worth of contracts
completed as of 2023

WHY CHOOSE US?

Ryobi-G is committed to providing exceptional service for every project awarded regardless of scale and/or complexity, delivering what is required to the best of our abilities.



Excellence in Performance

Over the years, Ryobi-G's commitment to excellence, adaptability, and seeing a job through to the very end has benefitted us, greatly, propelling our status as a well-respected, dependable geotechnical solutions provider in the industry. We greatly appreciate all those in the past who gave us the opportunity to prove our worth and are committed to our path of development and innovation with the aim of achieving operational excellence.



Proactive

Ryobi-G takes pride in offering a great customer experience and overall customer satisfaction. From assessing the problem to providing a solution, our teams are committed to working closely with the contractor and/or client every step of the way to ensure that the best solution is provided for the project at hand.



Innovative

Ryobi-G promotes a culture of continuous creativity and proactive innovation. We actively invest in research and development and promote the use of technology in our services wherever possible. Our innovative approach combined with our constant support for professional development within the company is what sets us apart from the competition.



Cutting-Edge Technology

Solutions to problems evolve as quickly as technology advances. We at Ryobi-G are always on the lookout for the latest piece of technology which keeps us at the forefront of the industry. Which also enables us to stay competitive and provide the best possible solution for our clients no matter the project type.



Accredited and Certified

We, as a company, hold ourselves accountable to uphold industry standards and regulations by ensuring that we are certified and accredited with all that is necessary for a project. Whether it be international standards such as ISO, or local (Singaporean) standards like bizSAFE, SAC-IB, and SAC-SINGLAS, we put the utmost priority in getting what is necessary to give our clients the confidence, assuring them that their project will be completed to the highest professional and technical standard.



AWARDS AND CERTIFICATIONS

The quality of Ryobi-G's operations and broad service offering standards are upheld by the following accreditations and awards:

QUALITY CONTROL & SAFETY MANAGEMENT CERTIFICATES



CONTRACTOR REGISTRY

CW02:
Civil Engineering

CR08:
Piling Works

CR12:
Ground Support &
Stabilisation
Works

CR15:
Site Investigation
Works

SY05:
Electrical &
Electronic
Materials, Product
& Components

GENERAL BUILDER LICENSE & SPECIALIST BUILDER LICENSE

General Builder
Class 2

Specialist Builder
(Piling Work)

Specialist Builder
(Ground Support and
Stabilisation Work)

Specialist Builder
(Site Investigation
and Stabilisation
Work)

AWARDS

Singapore SME 500 Company
2008 Safety Management
System with BCA

SME Growth Excellence
Award Year 2010

OUR CLIENTS

Ryobi-G operates across diverse sectors, and industries, with clients ranging from private owners to local authorities. Some of the key organisations we have worked with include:



Manufacturing

Caterpillar Inc.
Abbott Manufacturing Singapore Pte Ltd



Defence

Defence Science &
Technology Agency, Singapore



Real Estate

CapitaLand
Lendlease Group
JTC Corporation



Environment & Water Resources

Singapore Food Agency
Public Utilities Board, Singapore
National Environment Agency, Singapore



National Development

National Parks Board, Singapore
Housing & Development Board, Singapore
Urban Redevelopment Authority, Singapore



Transport

SBS Transit Ltd
Changi Airport Group
Land Transport Authority, Singapore
Maritime and Port Authority of Singapore



Infrastructure

SP Group
China Railway
Shanghai Tunnel
Sembcorp Industries



Education & Health

National University of Singapore
Nanyang Technological University
Ministry of Education, Singapore
Ministry of Health Singapore



Civil Engineering & Construction

GS E&C
Obayashi Corporation
Hyundai Engineering and Construction
KTC Civil Engineering & Construction Pte Ltd

Taisei Corporation
Samsung Construction
Hyundai Engineering and Construction
China Communications Construction Company

OUR HAPPY CLIENTS & FEEDBACK

Feedback from our clients helps us to continuously improve our services across the industry. Here are what some of our past clients have said about their experience working with Ryobi-G:



“ Job was satisfactory. ”

JTC Coporation



“ Good job. Excellent. ”

Nanyang Technological University



“ Excellent job. ”

Maritime and Port Authority of Singapore



“ Good work.
Was satisified with the job. ”

Greatearth Construction Pte Ltd



“ Overall job was good, particularly
with work progress and deliver. ”

Surbana Jurong Consultants Pte.Ltd

COMPANY PORTFOLIO

Our project portfolio is extensive, containing a mix of Geotechnical, as well as Modeling & Imaging projects in the public (government-related) and private sectors. To find out more information about our past projects (track record), you can get in touch with us via email and/or phone.

Please refer to the last page for contact details



OUR SERVICES

Ryobi-G provides a comprehensive range of Geotechnical, Modelling & Imaging services to clients, ranging from soil investigation and geophysical survey to geotechnical engineering and 3D geospatial data collection via laser scanning.

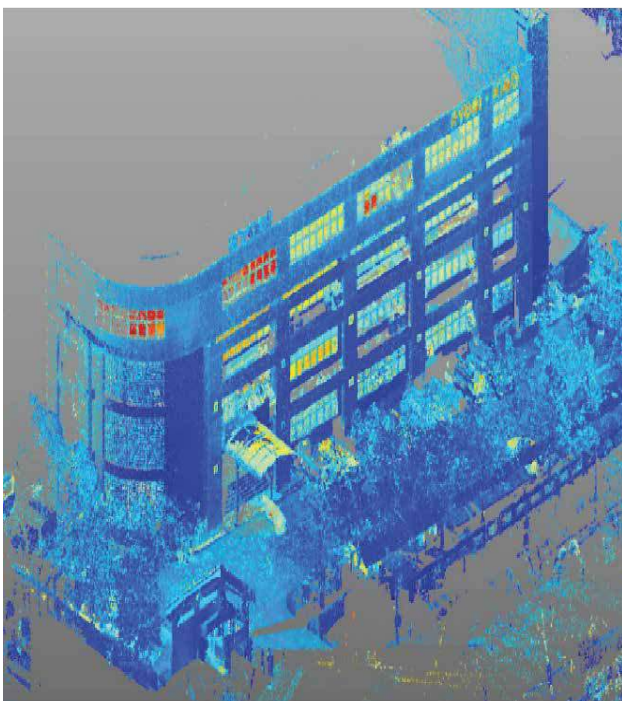


GEOTECHNICAL

Our geotechnical services offer a broad spectrum of assessments for surface and subsurface examination of your site.

Leveraging our extensive experience of various ground conditions and advanced instrumentation, we are able to characterize and evaluate soil samples, conduct site evaluation and screening to help you thoroughly understand the risks and opportunities of your project site.

We provide site investigation, laboratory testing, professional consultancy services, and problem solving through design and monitoring of the ground and substructures.



MODELLING & IMAGING

We at Ryobi-G utilize modern-day techniques such as 3D Laser Scanning to provide our clients with quality data that can be used in inspection, data acquisition, and modelling applications across a wide range of industries.

The techniques and equipment used in our data acquisition services provide access to data from sites that would traditionally have been considered dangerous and / or costly to attain using conventional methods.

With our capabilities, we can help save time and cost while offering the highest quality data available on the market in the safest way possible.

OUR GEOTECHNICAL SERVICES

Ryobi-G employs an interdisciplinary approach combined with in-depth expertise to tailor-suited design solutions and solves our client's challenges in various geotechnical fields. Below are the geotechnical services we provide:

GEOPHYSICAL SURVEY



Geophysical surveys are a common practice for any site investigation that requires non-invasive means of examining the subsurface properties of the Earth. This is done through using special equipment at ground level to measure, analyze, and interpret the physical fields underground.

Like many industries, it gained popularity in construction as a commercially viable survey method due to its ability to cover large areas at low cost.

Our geophysical survey techniques includes:

- ✓ Resistivity Test
- ✓ Borehole Radar Test
- ✓ Electrical Imaging (EI)
- ✓ Downhole Seismic Test
- ✓ Crosshole Seismic Test
- ✓ Borehole Magnetometer
- ✓ Seismic Reflection (FL) Test
- ✓ Seismic Refraction (FR) Test
- ✓ Ground Penetrating Radar (GPR)
- ✓ Downhole PS Suspension Logging Test
- ✓ Multi-channel Analysis of Surface Wave (MASW)



Ryobi-G adopts a comprehensive approach in designing the most effective geophysical survey solution for each unique project requirement. This is done by integrating more than one method seamlessly into a single solution; a suitable combination of geophysical survey techniques.

Applications include:

- Soil/rock profile imaging (2D or 3D).
- Locate fracture/cavity in bedrock.
- Identifying the depth of existing piles.
- Detection of void/cavity/soft zone, ground water table/ wet zone.
- Cross-hole tomography between boreholes, detection of underground structures.
- Underground obstruction (e.g. boulder, structures, reinforcement, sea wall & services/utilities, etc).



VIBRATION & TREMOR MONITORING



Ryobi-G offers a comprehensive set of vibration monitoring services to help you monitor and control the impacts of vibrations on people and facilities in various environments.

Our technology helps clients determine the cause of excessive vibrations and reduce their impacts, respond to complaints about vibrations, demonstrate compliance with project requirements, and manage claims of alleged damage from vibrations.

Our vibration & tremor monitoring services include:

✓ **Micro-Vibration Monitoring**

Ryobi-G’s micro-vibration monitoring system is specially designed to detect low scale ambient vibrations.

These vibrations may adversely affect facilities that house sensitive equipment such as MRI scanners and cause errors, although they may not be perceptible to human senses.

✓ **Real-Time Tremor Monitoring**

Ryobi-G’s Tremor Monitoring System (RG-TMS) capability in picking up small tremors that are not obvious to people, does not only help in saving costs, but most importantly, it helps to save lives.

Our system is also equipped with real-time features, making it possible for the user to access the data anytime and anywhere.



Ryobi-G monitoring system offers the benefits of an integrated system with Real-time Monitoring, Alert System, and Systematic Recording of data. With such features and real-time data generated by our system, immediate remedial action or mitigating measures can be taken as soon as possible.

Applications include:



ASSESS

Determine whether the vibration data acquired exceeds acceptable limits.



INVESTIGATE

Identify and verify vibration sources and transmission paths.



MITIGATE

Recommend and implement modifications/adjustments to achieve the ideal reduction in vibration level.

OUR MODELLING & IMAGING SERVICES

Ryobi-G employs the latest industry-standard techniques combined with cutting-edge technology to collect and process data electronically. Further details outlining the modelling & imaging services we provide can be found below.

3D LASER SCANNING



3D Laser Scanning (3DLS) is a remote mapping and imaging technique which uses lasers to capture an object's digital representation in a 3-dimensional space as efficiently and as accurately as possible.

We at Ryobi-G use world-class 3D laser scanning equipment from renowned brands such as Leica® and Faro® to ensure the data we collect meets the highest of industry standards. This enables us to create digital (3D) representations of large, complex structures such as building interiors, processing plants, as well as dynamic environments like construction sites.

Applications for data collected from 3D laser scans are used regularly by professionals to help with decision making throughout a project's life cycle(s) across various sectors and industries. From point cloud registration, to rendered digital 2D scale drawings and / or 3D models - and everything in between, we have the resources to deliver results.



Ryobi-G's 3D laser scanning services offer clients the ability to collect large amounts data safely, efficiently, and economically – saving the client time, money, and above all, the safety of all onsite.

Industries we've worked in:

- ✓ **Industrial**
-Refineries and Plants
- ✓ **Infrastructures**
-Tunnels, Roads, Reservoirs, Railway Tracks and Barrage
- ✓ **Buildings**
-Offices, Warehouses and Multistorey Apartment (Exterior & Interior)
- ✓ **Others**
-Historical/Heritage Parks and Plantations



BROCHURE

2000-PRESENCE

Singapore:



Ryobi Geotechnique International Pte Ltd
70 Sungei Kadut Loop Singapore 729511



Tel: +65 6369 7100
Fax: +65 6362 5848



Email: rock@ryobi-g.com
Website: www.ryobi-g.com

Malaysia:



Ryobi Geotechnique (M) Sdn Bhd
31-5, Block E1, Jalan PJU 1/42, Dataran
Prima, 47301 Petaling Jaya, Selangor



Tel: +603 7880 2684



RYOBI G IS NOW PART OF SGS, THE WORLD'S LEADING
TESTING, INSPECTION AND CERTIFICATION COMPANY.



Ryobi G